

AIMS strives to provide training and information for equipment supplied, used and installed by AIMS field staff. Your responsibility to follow these instructions will provide a safe and effective means of avoiding risks during construction. At no time should you continue using equipment that you have not been trained on or is operating outside the margins of the standards set forth by AIMS.

This equipment must be installed exactly as described within this manual for proper operation. Failure to follow the instructions for installation will cause false reading, improper operation or premature failure of the device.

This equipment must be operated exactly as described within this manual. Failure to operate the device as instructed in this manual may cause serious injury as well as damage to the device and/or a shorter operational life span.

As a superintendent, foreman or carpenter – It is your responsibility to follow these instructions and perform the required task in a safe, professional manner. If you cannot perform the task in such a way with this device, make the necessary arrangements to do so.



DIGITAL AIR PRESSURE MONITOR

JOB SITE AIR PRESSURE MONITOR WITH DATA LOGGER

UNIT NO.:

Troubleshooting

6.3 Background Color

There are four different background colors representing the pressure monitor state. A description of each color is provided below.

Color	Description
Green	Differential pressure is within the pressure settings limit.
Yellow	Pre-alarm to signal that the differential pressure is outside of the set limit. The background will remain yellow until the differential pressure is once again within the set limit or the Alarm Delay time has passed.
Red	The system is in an alarm state. The background will remain red until the differential pressure is once again within the set limit.
Blue	The pressure monitor room type is set as unoccupied and there are no alarms active.

Troubleshooting at this printing is mostly unknown.

If you lock up the screen input by static discharge, you only have one option to reset the unit. Leave it on until the battery runs dead and shuts down. The only other option is to replace it with another unit and send the locked up unit back to Livonia or wait until the battery goes dead.

IF you MUST take the power supply wiring connector apart, here is the polarity you must maintain.

Solid conductor – no hash marks



Power Connector
Conductor clamp screw heads on top

Hash marks on conductor

Make sure NO bare wire strands
Are outside the socket!

Please call for support with this unit should you have issues with setup or operation.

Parts List & Installation tools needed



A.P.M. Unit



Reference and Room air tubes
With coupler
(2 per unit)



A.P.M.
Power Supply



A.P.M.
Wall Bracket

TUBING INSTALLATION AND COUPLERS

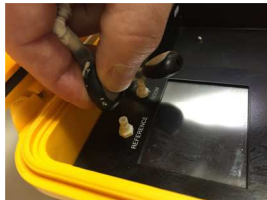
THE A.P.M. uses couplers to connect the air line tubes to the head unit itself. Do not install tubing directly onto the head unit ports as a true seal will not be insured as well as tubing fatigue may allow tube to disconnect under minor tension.

During installation align tubes as required and use the A.P.M. case notches to hold the tube at their proper length inside the unit.

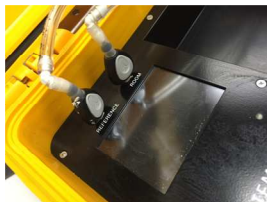


Using the notches in the cabinet, align the air line tubes with their respective port on the A.P.M. head unit. DO NOT connect them until the power up procedure has been completed successfully. Press the tubes into the notches on the cabinet to hold the air lines in place until the POWER UP PROCEDURE is complete.

Perform the POWER UP PROCEDURE at this time.



The couplers are squeeze and plug-in locking connectors designed to be flexible and air tight. The couplers can rotate on the head port. The elbow is required to prevent kinking behind the lid when unit is closed.



This is a typical view of the couplers connected and the unit is ready to track air pressure for the duration of the project.

POWER UP PROCEDURE

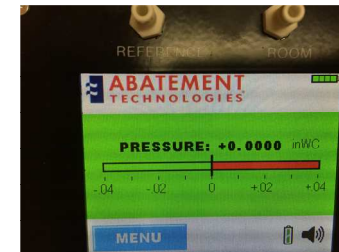
THE A.P.M. uses sensitive components to define an air differential between the reference air pressure and room/job site air pressure. The unit needs to be validated during installation prior to using it for accurate and reliable monitoring of air pressure. This procedure MUST be completed, it MUST be done every time the unit is installed at a job site and MUST be adhered to for proper data acquisition.

1. The unit is mounted, power is connected and the air lines are in place and NOT CONNECTED to the A.P.M. unit.
2. Power up the A.P.M.
3. Enter a 3 digit job number (This does not fit the AIMS job number scheme)
4. Notice the pressure reading. If it is NOT 0.0000 then you must configure the system and zero the gauge.

TO ZERO GAUGE PRESSURE READING – Initial setup.
UNIT MUST BE ON FOR A FEW MINUTES FOR SENSORS TO ADJUST TO LOCAL TEMPERATURE AND BASELINE PRESSURE.

- A. Press the Menu icon
- B. Press the Administration icon
- C. Press the Advanced Setting icon
- D. Press the Calibration Icon
- E. Press the Zero Calibration Icon
- F. Press YES Icon
- G. Press EXIT Icon
- H. Press YES Icon to SAVE changes

The gauge should now show a ZERO differential on the display.



The unit is now validated for use and you may connect the reference and room couplers to the A.P.M.



UNIT: M5

JOB SITE
AIR PRESSURE MONITOR



UNIT: M9

JOB SITE
AIR PRESSURE MONITOR



UNIT: M4

JOB SITE
AIR PRESSURE MONITOR



UNIT: M6

JOB SITE
AIR PRESSURE MONITOR



UNIT: M10

JOB SITE
AIR PRESSURE MONITOR



UNIT: M3

JOB SITE
AIR PRESSURE MONITOR



UNIT: M7

JOB SITE
AIR PRESSURE MONITOR



UNIT: M11

JOB SITE
AIR PRESSURE MONITOR



UNIT: M2

JOB SITE
AIR PRESSURE MONITOR



UNIT: M8

JOB SITE
AIR PRESSURE MONITOR



UNIT: M12

JOB SITE
AIR PRESSURE MONITOR



UNIT: M1

JOB SITE
AIR PRESSURE MONITOR

Date: _____

A.P.M Number (Mx): _____

Installer: _____

Print your name clearly

Project Number: _____

Project Name: _____

Installed per M02 manual specifications: _____
Initials

Zero calibration "Power Up" completed: _____
Initials

Static pressure reading with ICRA in place: _____
(All doors/windows/seals in place – HEPAs running)

Room Settings: _____ WC

Alarm settings: Audible Enable YES NO

Silence Delay _____ Sec.

Alarm Delay _____ Sec.

Date: _____

A.P.M Number (Mx): _____

Installer: _____

Print your name clearly

Project Number: _____

Project Name: _____

Installed per M02 manual specifications: _____

Zero calibration "Power Up" completed: _____

Static pressure reading with ICRA in place: _____
(All doors/windows/seals in place – HEPAs running)

Room Settings: _____ WC

Alarm settings: Audible Enable YES NO

Silence Delay _____ Sec.

Alarm Delay _____ Sec.

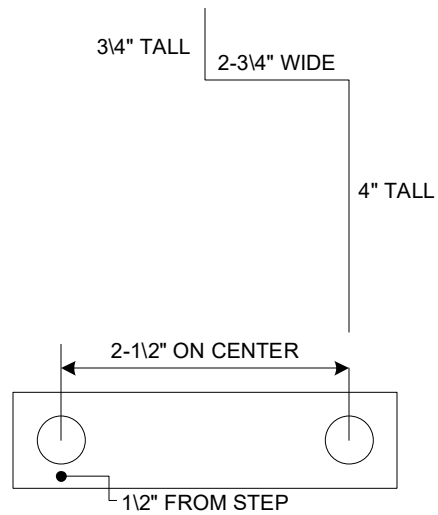
IN-HOUSE Support Information: RPM-3 A.P.M. units

Power Supply RPM230PSUP \$63.00
6VDC, 1AMP UNIT ID: EPS060100

OEM WALL HNGR RPM-HANG \$45.00
(SEE BELOW) #10-32 SCREW

TUBING IS 1/4" OD AND 1/8" ID TUBING (HOME DEPOT)
REF TUBE 18" LONG WITH ELBOW
ROOM TUBE 10' WITH ELBOW/RETURN AND LABEL

MINAMOTO BATTERY
LP504884
3.7V 2000mAh
FLAT PACK



“Shelf Stock” Wall Bracket

This bracket can be purchased at Home Depot or similar and works out well.

Bracket is 2" x 2" x 5/8" standard L Bracket

Screws are #10-32 x 1/2"

This is what it will look like



Transport/Storage position



Wall Mounting position

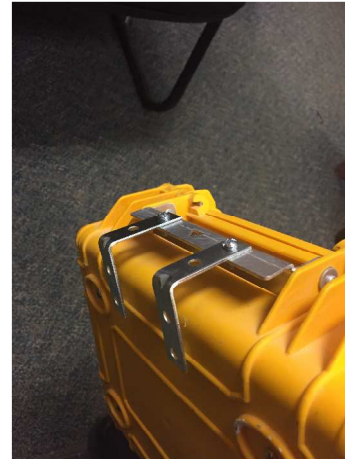
“Shelf Stock” Wall Bracket

This bracket can be purchased at Home Depot or similar and works out well.

Bracket is 2" x 2" x 5/8" standard L Bracket

Screws are #10-32 x 1/2"

This is what it will look like



Transport/Storage position



Wall Mounting position